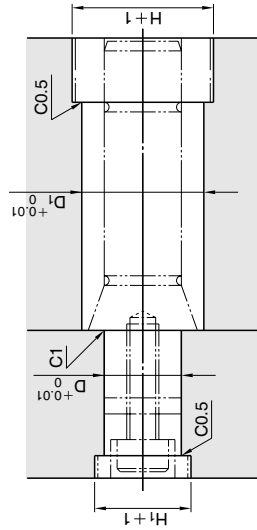
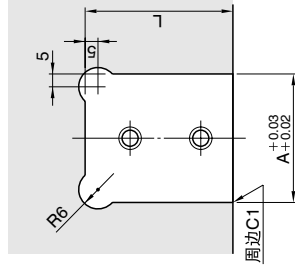


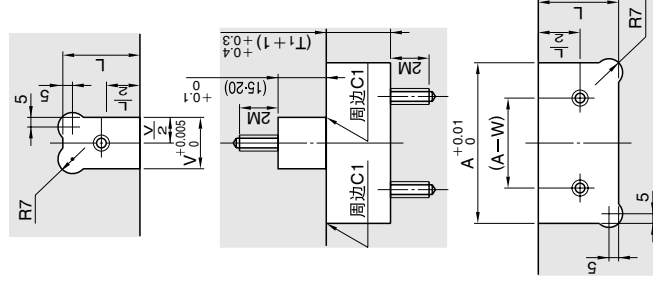
锥面导向精定位销组件适用



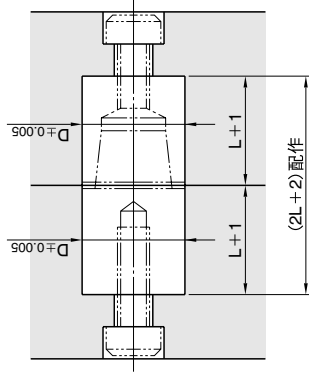
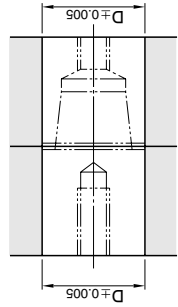
锥面精定位块组件适用



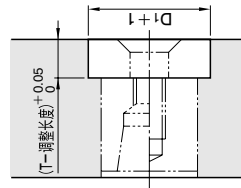
精定位块组件适用



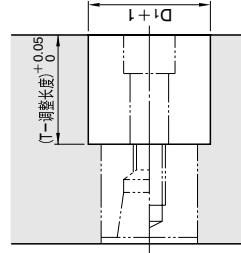
锥面精定位销组件适用



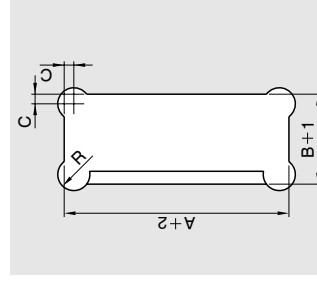
锥面精定位销组件用垫圈(TPS)适用



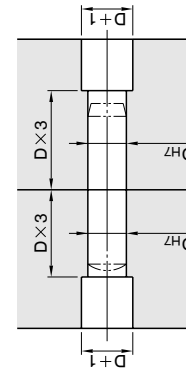
锥面精定位销组件用垫圈(TPD)适用



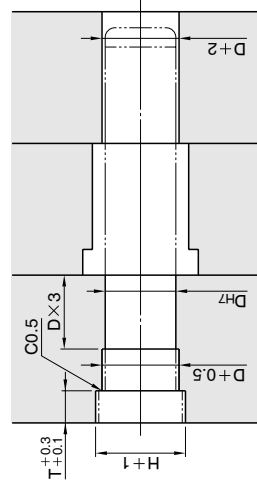
侧定位块适用



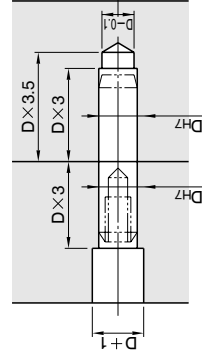
直杆型定位销(MS)适用



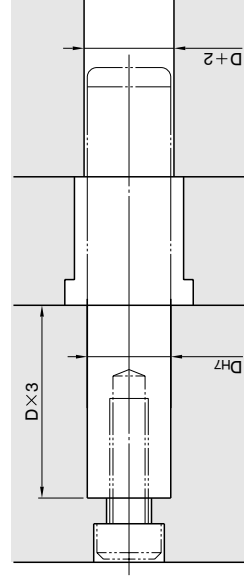
带肩型精密级导柱(GPHL)适用



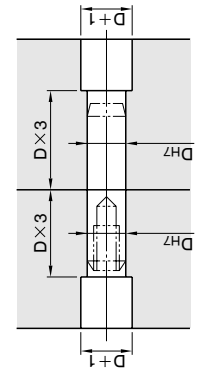
带螺纹孔直杆型定位销适用



直杆型精密级导柱(GPSL)适用



带螺纹孔直杆型定位销适用



带防脱落槽(YC)加工直杆型导柱适用

