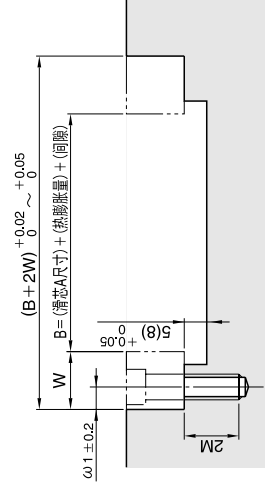
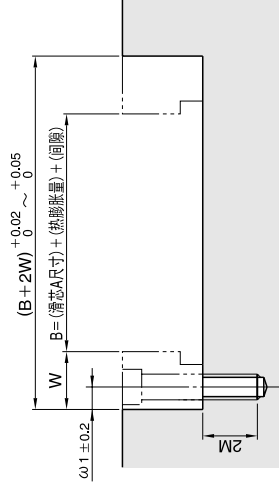


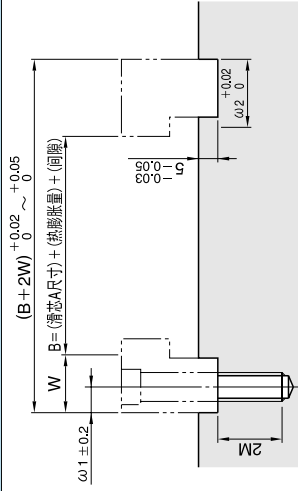
无槽型导轨适用



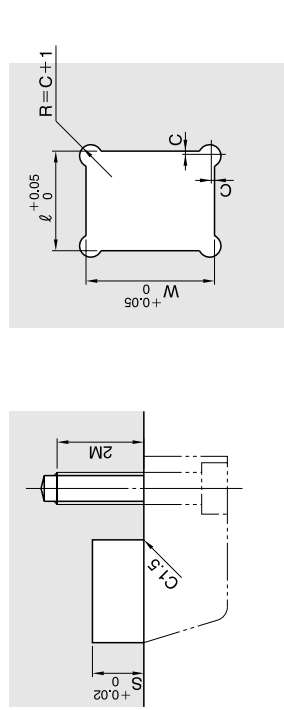
导槽型导轨适用 (导槽高 5 · 8mm)



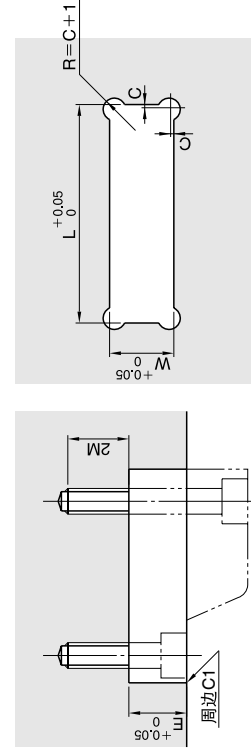
导槽型导轨适用 (导槽高 15mm)



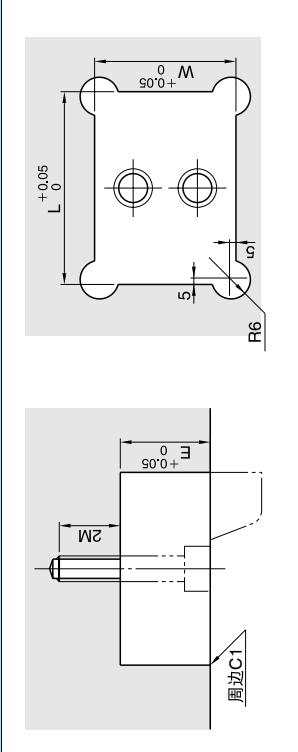
带斜导柱孔型斜楔 (ABPX) 适用



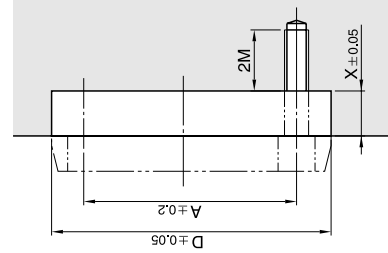
带斜导柱孔型斜楔 (ABPZA) 适用



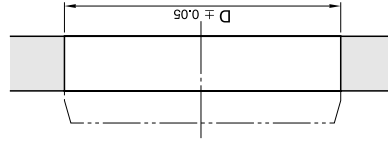
带斜导柱孔型斜楔 (ABPZB) 适用



定位环适用

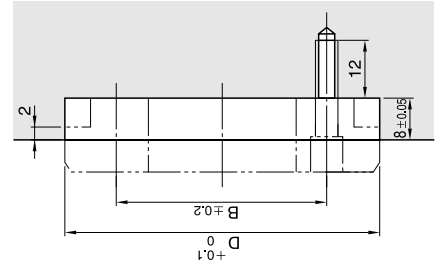


定位环适用

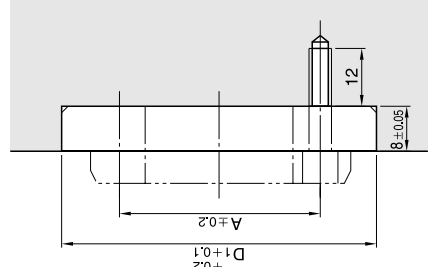


X为任意尺寸

两面定位环适用

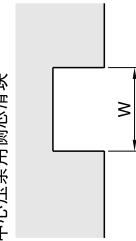


大口径定位环适用

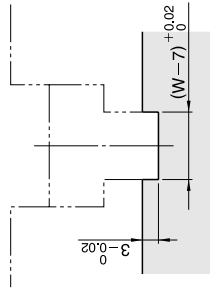


中心导轨适用

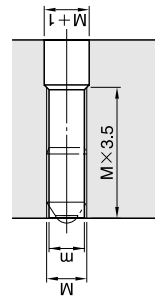
· 中心压条用侧芯滑块



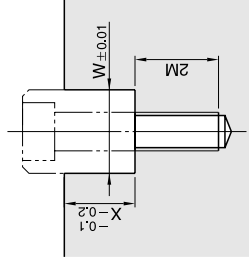
双导槽型导轨适用



球头柱塞适用



X为任意尺寸



球型垫块适用

