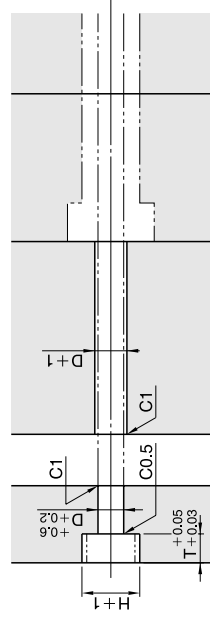
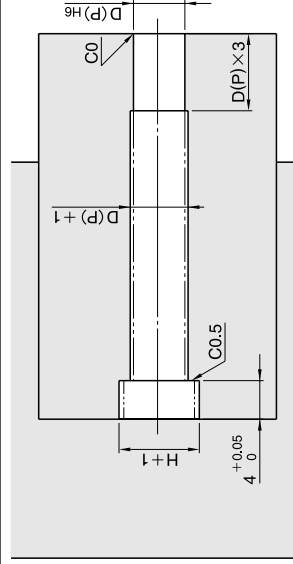


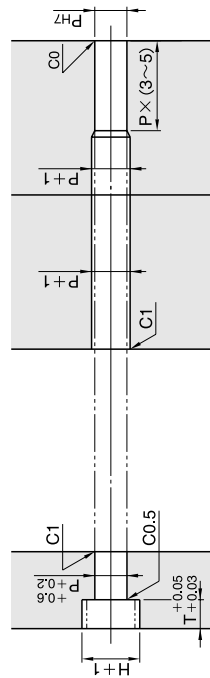
中心销适用



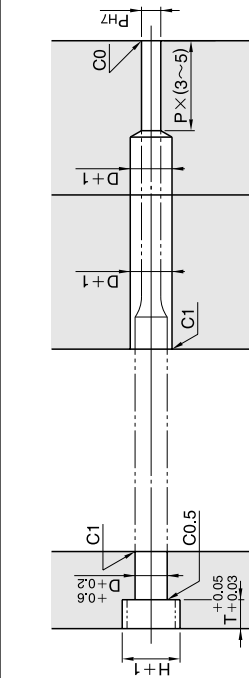
型芯适用



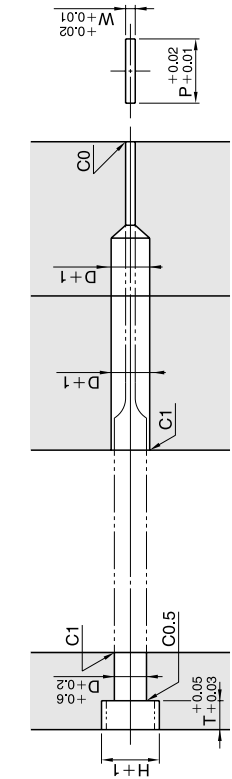
直推杆适用



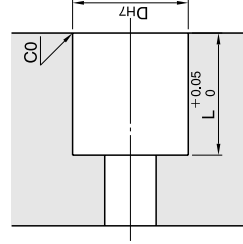
台阶推杆适用



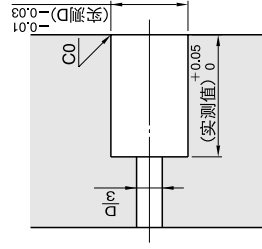
扁推杆 (P·W公差 $^{0}_{-0.01}$)适用



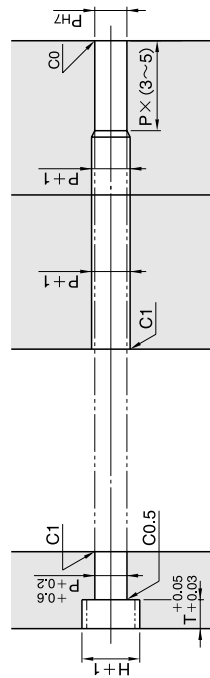
日期章组件适用



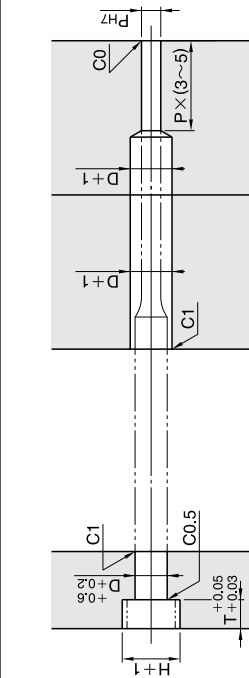
TS排气元件适用



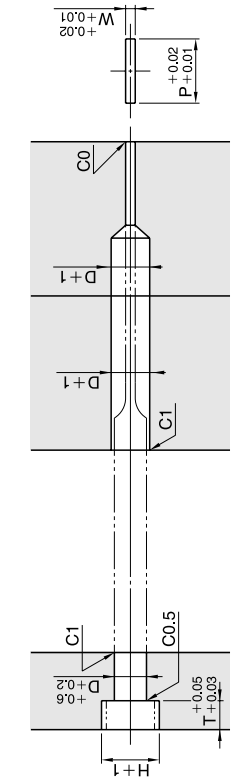
直推杆适用



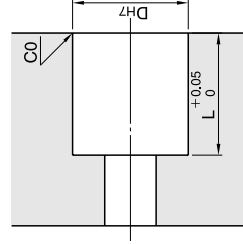
台阶推杆适用



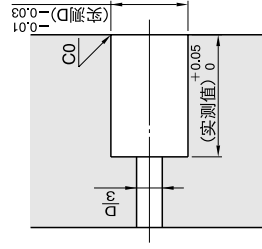
扁推杆 (P·W公差 $^{0}_{-0.01}$)适用



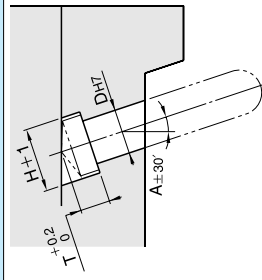
日期章组件适用



TS排气元件适用

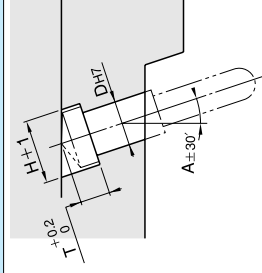


斜导柱 (AP·APZ)适用



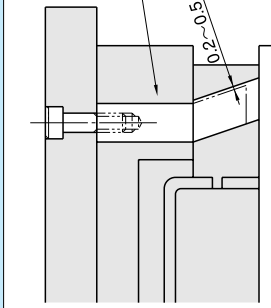
D	C
4~10	D+0.5
12~20	D+1
25~32	D+2
35~50	D+3

斜导柱 (APS·APZS)适用

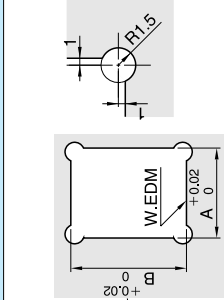


D	C
4~20	D+1
25~32	D+2
35~50	D+2

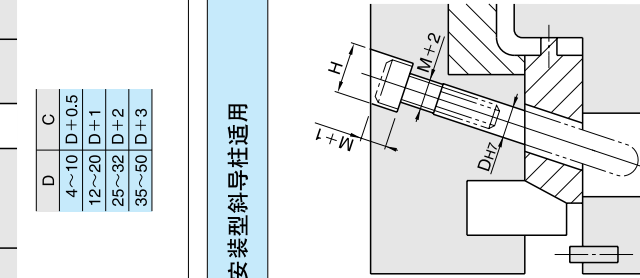
方形斜导柱适用



方形斜导柱适用

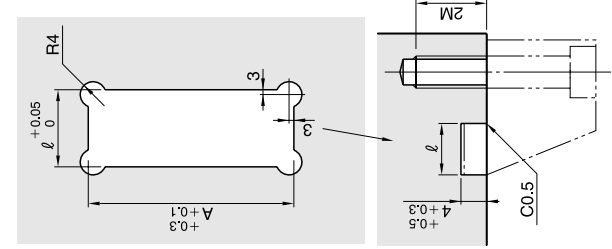


带肩型楔紧块适用

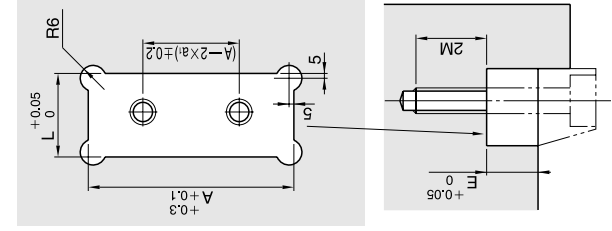


M	H
6	11
8	14
10	17.5
12	20
16	26
20	32

带肩型楔紧块适用



嵌入型楔紧块适用



螺孔安装型斜导柱适用

